

UCLA Geography

Undergraduate Newsletter



Here at the UCLA Geography Department, we want to empower our students with the necessary information to successfully navigate through their undergraduate careers.

In this newsletter you will find:



Department Contact Information, Tips for starting the quarter, reminders, links to helpful resources, and more. Keep Reading!



Geography Department Contact Information

Jenée Misraje is the Student Affairs Officer.
If you like to sign up for undergraduate
zoom advising sessions click on the
following link

<https://geogsao.youcanbook.me>

Reach out to Jenée at jenee@geog.ucla.edu

Drop in office hours 1255 Bunche Hall
Wednesdays 10am – 2pm
subject to change.

Ariana Rodriguez is the
Assistant Undergraduate Advisor

Reach out to Ariana at
undergraduate@geog.ucla.edu
with general questions about
Majors and/or minors
Declaring/dropping a major/ minor
General inquiries

UCLA Geography



HERE ARE 5 TIPS TO GET THE QUARTER STARTED RIGHT



Geography department asked various graduates what are some of their best tips to prepare for the quarter and here are their responses.

Be Prepared

Keep track of important information and deadlines.

Make sure to check MYUCLA frequently so you don't miss any important communication. If you have a question check the UCLA website and make sure you are as prepared as you can be.

Go Explore Campus

If you haven't already learn the campus and buildings. Go on an adventure to find the best places to get coffee or lunch. Maybe go see where your classes will be this quarter. You never know what you will discover along the way!

Ask for help

Don't be afraid to ask for help if you need it. The UCLA Geography Department is here to help you. Don't be afraid to send in your questions to our email undergraduate@geog.ucla.edu or stop by the office. Also be sure to take advantage of office hours or advising sessions. If you are struggling with your mental health reach out to the [counseling and psychological services](#) on campus. UCLA is here to help in any way we can.

Take Advantage of Campus Resources

UCLA has a plethora of campus resources whether you are searching for academic support through the writing center, center of scholarship, or academic counseling. Perhaps you are just searching for community through one of the various specific population centers. UCLA has almost anything you may need you just have to put in the energy to find it.

Get involved

Remember that going to university should also be fun. Be sure to enjoy everything campus has to offer. That may look like joining a club or organization like the GEOG Student Association. Maybe you can support the UCLA teams by going to one of the many sporting events. If volunteering is your thing stop by the UCLA volunteer center. There is something for everyone!

Before the Quarter Begins Remember !

Dates to watch out for

- Sept 17 Enrollment opened for everyone on campus
 - Be sure to check entire list of available classes online
- Sept 20 registration fee deadline
- Sept 26 Fall Quarter Classes begin
- Sept 27 Classes dropped for non payment



Geography Attendance Policy

The department will cancel your enrollment if you do not attend at least one of the first two class meetings (for classes that meet two days each week), or the first class meeting (for classes that meet one day each week).

Geography Petition to Enroll (PTE) Policy

As a reminder the Geography department does not provide PTE numbers. A PTE number is issued by the instructor or professor offering the class. These are given at their discretion. Please contact the professor for more information.

Find out more Frequently Asked Questions here

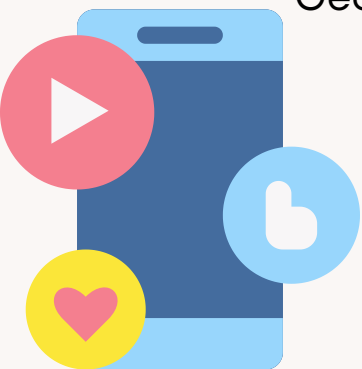
<https://geog.ucla.edu/academics/undergraduate/faq/>

Department Opportunities to Consider

Geography Association - Student Association

All UCLA undergrad are welcome to join the Geography Association. The Geography Association seeks to help undergraduates explore and utilize the resources available to them, while creating community among Geography enthusiasts!

Get more information at <https://uclageographyassociation.org/>
Follow on Instagram @ucla.ga



Geography Department Honors



Geography Honors Program is designed for highly motivated Geography and Geography/Environmental major students who are interested in completing a two-quarter research project (GEOG 198A, 198B) with a final thesis paper under the supervision of one or two Faculty Advisors. Students normally participate in the Geography Honors Program during their senior year.

Get more information at

<https://geog.ucla.edu/academics/undergraduate/departmental-honors/>

Geography Department Scholars

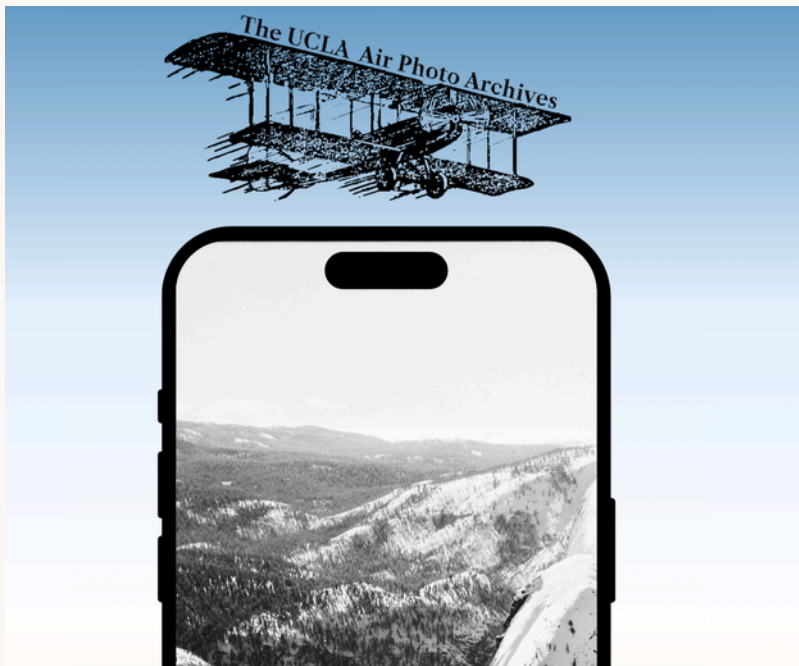


The Departmental Scholar Program (DSP) in Geography allows exceptional undergraduate geography students to pursue the bachelor's and master's degrees simultaneously.

Get more information at

<https://geog.ucla.edu/academics/undergraduate/departmental-scholar/>

<https://geog.ucla.edu/wp-content/uploads/2024/09/Departmental-Scholar-Guidelines.pdf>



Follow @ucla_air_photo

Follow us on Instagram for a captivating journey through historical aerial imagery that will transport you back in time. From cityscapes to breathtaking landscapes, our feed offers a visual delight of the past like never seen before. Visit our website to explore and purchase high quality art prints that bring elegance and nostalgia to any space.

Helpful Links

- UCLA Student Affairs & Services
<https://www.studentaffairs.ucla.edu/for-students>
- College of Letters and Science Academic Counseling
<https://caac.ucla.edu/>
- Undergraduate Writing Center
<https://uwc.ucla.edu/>
- Undergraduate Admission- Campus Life
<https://admission.ucla.edu/explore/campus-life>
- Center for Scholarships & Scholar Enrichment
<https://www.scholarshipcenter.ucla.edu/campus-resources/>
- Counseling & Psychological Services
<https://counseling.ucla.edu/>









Free Upcoming Events

TRUE BRUIN WELCOME

September 22 - 28, 2024

[Highlights](#) [All Events](#)

Highlights

 <p>University Housing Move-in Sat 9/14 - Sat 9/21</p>	 <p>Graduate Student Orientation Mon 9/16 - Wed 9/18</p>	 <p>Commuter Student Welcome Sun 9/22 - 12PM - 3PM</p>	 <p>Chancellor's Welcome Sun 9/22 - 4PM - 5PM</p>
 <p>Block Party Sun 9/22 - 5PM - 9PM</p>	 <p>Bruin Bash Rec Fest Mon 9/23 - 12PM - 4PM</p>	 <p>Bruin Bash Mon 9/23 - 6PM - 9PM</p>	 <p>Enormous Activities Fair Tue 9/24 - 11AM - 3PM</p>

<https://community.ucla.edu/truebruinwelcome>